

BROUGHTON ISLAND (INSET 1 - Bottom Left Corner)

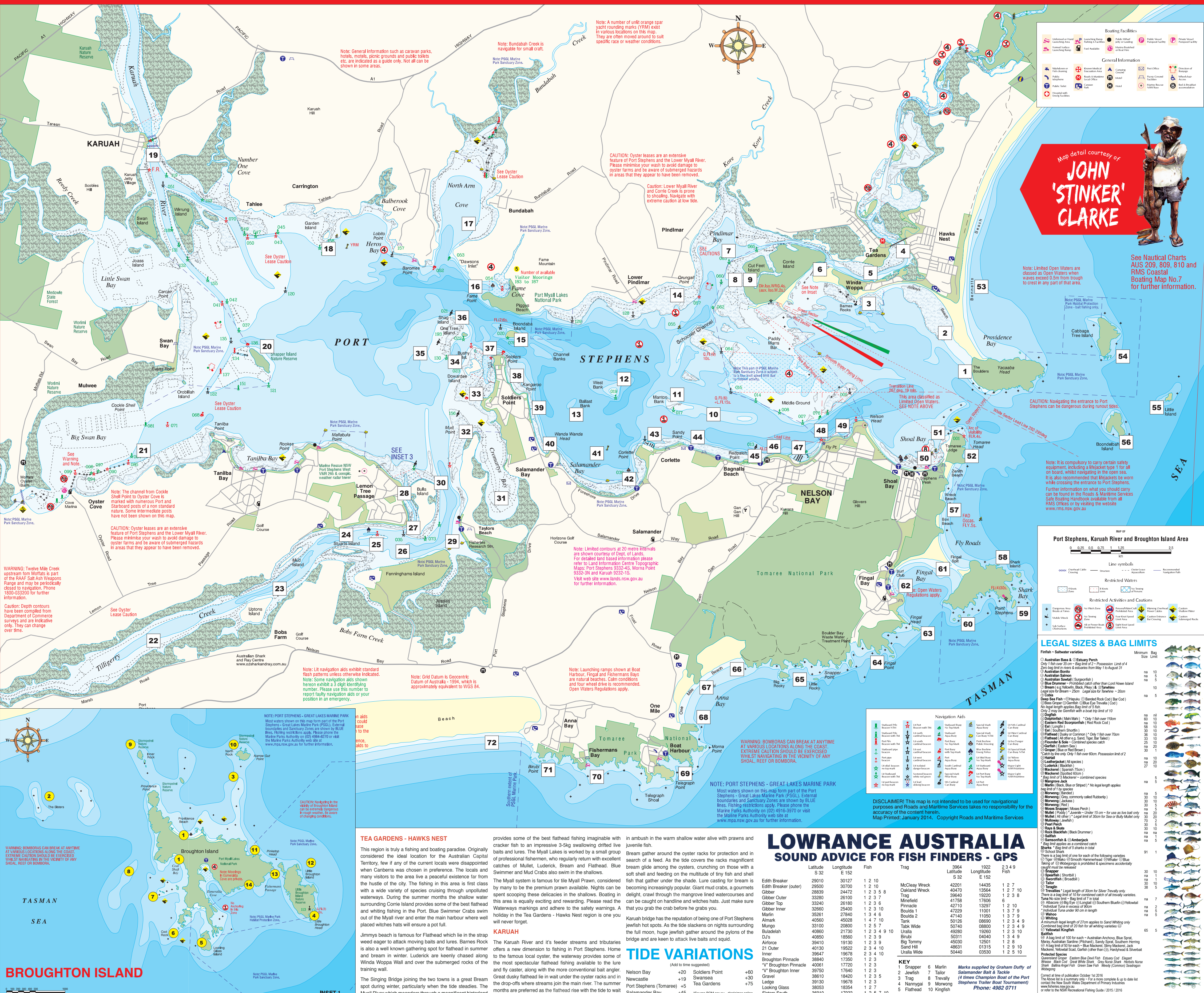
- 1 Coalshaft and Providence Beach - Whiting, Flathead on rising tide
- 2 The Sisters - Early morning/Late afternoon - Shallow water - Drift or anchor for Snapper
- 3 The Guts Drift for Squire, Flathead, Squid in the shallows
- 4 East Head - Early morning before daylight Jewfish and Snapper - Cobia in season, sit wide Morwong
- 5 Looking Glass - Yellowtail Kingfish, Tailor
- 6 Cod Rock - Jew, Snapper, Drummer, Bream in the wash
- 7 Pops Bomie - Squire dawn and dusk
- 8 Jims Leap - Fish up the rise Snapper
- 9 West Island - Drummer, Bream in the wash, Snapper
- 10 North Island - Kingfish, Snapper, Jew, Cobia
- 11 Pinkatop Head - Squire
- 12 Little Broughton - Troll the walls for Bonito, Kingies
- 13 Fishermans Passage - Drummer on walls, Leatherjackets
- 14 The Steps - Groper, Drummer

BEST ALL ROUND BAITS

- Bream - Mullet gut, fish filets (Mullet, Tailor Slimy Mackerel), Prawns, cubed Pilchards. Worms and Pippies off the beach.
- Jewfish - Live Yellowtail and Slimy Mackerel, Squid, Pilchards, fish filets (Mullet, Tailor, Slimy Mackerel). Worms off the beach.
- Groper - Rock crabs (limit of 10)
- Drummer - Abalone gut, Curjevoi, Prawn.
- Whiting - Worms and Pippies.
- Leatherjacket - Salted Pippies, Prawn, Squid.
- Flathead - Pilchards, fish filets, keen to take lures.
- Tailor - Pilchards, fish filets, lures.
- Snapper - Squid, fish filets, Pilchards, Prawns.
- Kingfish - Live bait, Pilchards, Squid.
- Squid - King Prawn jig.
- Luderick - Green weed and rock cabbage.
- Salmon - Pilchards, lures.

FISHING LOCATIONS PORT STEPHENS AND THE MYALL

- (1) The Boulders - Great Bream during autumn/winter
- (2) Jimmys Beach - Drifting or casting between the weed beds for Flathead. Sand and Trumpeter Whiting and Flounder.
- (3) Barnes Rocks - Bream, Flathead, Blue Swimmer Crabs
- (4) Myall River - Variety of species up to Tambol - Bream, Flathead, Whiting, Prawns during summer and Crabs.
- (5) Winda Woppa - Luderick on the walls April to November.
- (6) Short Cut - Luderick on the run up tide along the training wall. Bream on the wall and mangroves. Flathead best targeted by walking the sand bars on a rising tide.
- (7) Duck Hole (Pindimar Bay) - Anchor away from the wrecks and berley the Bream out.
- (8,9) Corrie Island - High water. Fish between the oyster racks and mangroves for bream. Drift or walk the sand bars for Flathead.
- (10,11,12,13) Middle Grounds, Manton, West and Ballast Banks Drifting for Flathead and Whiting during summer months.
- (14) Pindimar - Drift close to the racks Whiting, Bream.
- (15) Middle Island - Quality Bream close to rocky foreshore. Jew and Squire in the deep channels on slack tide. Tailor.
- (16) Fame Cove - Nannabah Creek. Jew on the entrance, Bream, Flathead in creek.
- (17) North Arm Cove - Bundabah Creek. Bream, Flathead and Whiting.
- (18) Garden Island (Goat Is.) - Whiting in channel, Bream on oyster racks.
- (19) Karuah - Jew under bridge, Flathead upstream to Allworth. Mudcrab along mangroves. Bream, Whiting call in at the... Karuah Jetty Village or Boatshed for detailed NSW Fisheries maps to Allworth.
- (20) Snapper Island - Eastern wall, Bream on rocky outcrops, Whiting on sand bar, Crabs along oyster racks.
- (21) Swan Bay - Oyster Cove - Twelve Mile Creek - Bream, Flathead on low tide, Whiting in the channel.
- (22) Tilligerry Creek - Crabs, Flathead, Bream, Whiting.
- (23) The Sticks - Whiting and Blue Swimmer Crabs.
- (24) Koala Shores - Bream, Flathead, anchor at high tide, Crabs in witches hats.
- (25) Stuarts Island - Flathead, Bream, Whiting and Crabs.
- (26) The Cages - Whiting, Flathead drifting, Crabs.
- (27) The Entry - Whiting drifting Crabs.
- (28) Lemon Tree Passage - Bream, Flathead, Whiting, Crabs, Luderick feeding off piles at marina and baths.
- (29) Bobs Farm Creek - Fisheries - Flathead, Bream, Crabs.
- (30) Bulls Island - Bream against oyster leases, Flathead, Whiting drift the island. Big Jew in holes.
- (31) Cromarty Bay - Flathead, Bream, Whiting.
- (32) Mud Point to Taylors Beach - Whiting, Flathead and Crabs.
- (33) Pearson Park Jetty - Great for kids - Whiting, Flathead, Mullet, Bream, Flathead, Garfish, Leatherjackets.
- (34) Dowardee Island - Bream amongst the oyster racks and mangroves.
- (35) Shallow Water - Drift for Whiting.
- (36) Rocks Awash - Bream on run up tide.
- (37) Soldiers Point - Bream and Flathead on the wall.
- (38) Kangaroo Point - Flathead and Whiting on the sand bar.
- (39) Salamander Wharf - Bream, Flathead, Whiting, Crabs, Luderick feeding off piles.
- (40) Wanda Wanda Head - Flathead, Bream, Whiting.
- (41) Psyche Wreck - Jewfish, Tailor, Squire, northern Bluefin Tuna and Mackerel Tuna.
- (42) Mambo Creek - Wade the mangroves and oyster racks, Flathead, Whiting, Bream.
- (43) Corlette Head, Anchorage Breakwall - Luderick, Bream, Leatherjacket, Flathead, Jewfish.
- (44) Sandy Point, Corlette Groynes - Excellent Flathead.
- (45) Bagnalls Beach - Flathead, Trumpeter Whiting, Blue Swimmer Crabs.
- (46) Dutchie, Red Patch - Whiting, Flathead.
- (47) Co-Op Breakwall - Excellent Bream, Luderick and Jewfish. Bream and big Flathead inside the marina. Perfect spot for a family fishing outing.
- (48) Fly Point, Nelson Bay Beach - Ideal for kids, Whiting, Bream and Flathead near the rocks off the beach. Marine Reserve - no fishing from boats.
- (49) Little Beach - Flathead as the tide rises, Whiting and Bream. Squid off the jetty Marine Reserve No fishing from boats.
- (50) Shoal Bay - Another ideal sport for the family Whiting, Flathead, Tailor and Bream. Squid around the moorings.
- (51) Tomaree Head - Inside the entrance great for Bream.
- (52) East Tomaree Head - Luderick, Tailor and Drummer. Legendary land based game fishing spot along eastern face Tuna, Kingfish and Marlin.
- (53) Hawks Nest Beach - Excellent Bream and Tailor through the winter months. Jewfish, Salmon and Whiting.
- (54,55,56) Cabbage Tree Island, Little Island and Boondelbah Island Snapper, Jewfish, Yellowtail, Kingfish, Cobia, Drummer, Bream and Groper. Squid in the calm water west of Cabbage Tree Island and south of Boondelbah Island.
- (57) Box Beach - Whiting, Bream, Jewfish, early morning Tailor and Salmon. Bream, Groper, and Drummer off adjacent rocks.
- (58) Grit Hole - Bream during winter months on sputherly moonless nights.
- (59) Tommy Rocks - (outright) Snapper, Jewfish, Drummer, Bream. Excellent fishing close to the white water.
- (60) Wrong Way Reef - Anchor well off whitewater and float baits in. Snapper, Bream, Drummer, Tailor, Salmon.
- (61) Fingal Beach - Great family fishing, Whiting, Bream, Flathead, Squid move over rocks towards the top of the tide.
- (62) Kiddies Corner - Bream and family fishing, Whiting, Bream, Flathead, Squid move over rocks towards the top of the tide.
- (63) Fingal Head - Yellowtail, Kingfish, Tailor, Groper, Leatherjacket, Snapper and Drummer in the white water.
- (64) Fingal Point - Groper, Leatherjacket and Snapper. Drummer in the white water.
- (65) Big Rocky - Jewfish, Snapper, Tailor, Bream, Drummer, Groper and Leatherjacket. Squid in all the adjacent calm bays.
- (66) Samurial Beach - In summer Whiting, Flathead, Bream, Jewfish, Salmon and in winter Bream and Tailor. A designated nude beach. Interesting fishing, 4 wheel drive access.
- (67) Middle Rock - Luderick, Bream, and school Jewfish. Difficult to fish, but rewarding.
- (68) One Mile Headland - Excellent fishing in southerly conditions, Bream, Jewfish and Tailor.
- (69,70,71) Boat Harbour, Fishermans Bay, Birubi Point Snapper, Jewfish, over the close reefs. Luderick, Drummer, Groper, Leatherjacket, Bream and Snapper off the rocks.
- (72) Stockton Beach - Excellent beach for family fishing, Whiting, Bream, Flathead, Jewfish, Tailor and Salmon. 4 wheel drive access.



LOWRANCE AUSTRALIA
SOUND ADVICE FOR FISH FINDERS - GPS

	Latitude S 32	Longitude E 152	Fish		Latitude S 32	Longitude E 152	Fish
dhk Biberaker	29010	30127	1 2 10		3964	922	2 3 4 9
dhk Biberaker	29500	30700	1 2 10	McClay Wreck	42201	14435	1 2 7 10
dhk Biberaker	28839	24472	1 2 3 5 8	Gibber	42470	13564	1 2 3 8
dhk Biberaker	32620	26100	1 2 3 7	39640	19220	1 2 3 8	
dhk Biberaker	32240	26180	1 2 3 6	Gibber	41758	17606	6
dhk Biberaker	32640	25400	1 2 3 10	Brouda 1	42710	13297	1 2 10
dhk Biberaker	32501	27840	1 3 4 6	Pinnacle 1	47229	11001	1 2 7 9
dhk Biberaker	45500	45028	1 4 7 10	47140	11050	1 3 7 9	
dhk Biberaker	40180	20800	1 2 5 7	50126	06990	1 2 3 4 9	
dhk Biberaker	40880	21730	1 2 3 4 9 10	50740	08880	1 2 3 4 9	
dhk Biberaker	40880	18560	1 2 3 9	49290	19290	1 2 3 10	
dhk Biberaker	39410	19130	1 2 3 9	50311	04040	1 3 4 9	
dhk Biberaker	40130	19520	2 3 4 10	Bkg Tommy	45300	12501	1 2 3 9
dhk Biberaker	39647	19678	2 3 4 10	49531	071315	1 2 3 10	
dhk Biberaker	38840	17350	1 2 3 10	50440	03530	1 2 5 10	
dhk Biberaker	40061	17720	1 2 3				
dhk Biberaker	39750	17640	1 2 3				
dhk Biberaker	38610	18420	1 2 3 5				
dhk Biberaker	39130	18678	1 2 3				
dhk Biberaker	38053	18554	1 2 7				
dhk Biberaker	36910	17022	1 2 5 7 10				

TIDE VARIATIONS

Nelson Bay	+20 (at time suggested)	Solwara Point	+60
Newcastle	+19	Swanes Bay	+30
Port Stephens (Tomaree)	+5	Tea Gardens	+75
Salamander Bay	+45	"Source BOM.gov.au - disclaimer online	

BROUGHTON ISLAND

INSET 1